

Fuel and refuelling

SAFETY PRECAUTIONS

WARNINGS



Petroleum gasses are highly flammable, have a low flash point, and are explosive, especially in confined spaces. Avoid exposing the gasses to any potential sources of ignition as the resulting fire and explosion may cause serious injuries and/or death.



Only use containers specifically designed for carrying fuel, and always remove them from the vehicle to fill them. Failure to do so may result in spillage, and cause a fire.



Switch off the engine when refuelling, as it is both a source of extreme temperatures, and electrical sparks. The resulting fire and explosion may cause serious injury and death.



Switch off any personal electronic devices such as mobile phones, or music players. They have the potential to cause electrical sparks. The resulting fire and explosion may cause serious injury and death.



Do not smoke, use a naked flame, or cause sparks. The resulting fire and explosion may cause serious injury and death.



Do not overfill the fuel tank. Overfilling may cause spillage when the vehicle is driven. Spillage may also occur if the fuel expands in high ambient temperatures.

FUEL QUALITY

CAUTIONS



Do not use leaded fuels, lead substitutes, or fuel additives. Doing so can cause damage to the engine, fuel, and emission control systems.



Only use high quality gasoline, as using lower quality fuels can cause damage to the engine, fuel, and emission control systems.



Fuel system cleaning agents should not be used, unless approved by Land Rover. Unapproved products may be harmful to fuel system components on your vehicle.

Octane rating

Note: Federal law requires that gasoline octane ratings be posted on the pumps. The Cost of Living Council (CLC) octane rating or Anti Knock Index (AKI) octane rating shown is an average of Research Octane Number (RON) and Motor Octane rating (MON).

Mid or regular grade gasoline with a CLC or AKI octane rating not lower than 87 should be used.

For optimum performance use fuel with a minimum octane rating of 91 (CLC or AKI). The vehicle will run on lower grade fuel, but doing so may cause engine knock or pinking.

Note: Occasional, light, engine knock experienced while accelerating or climbing hills is acceptable.

Ethanol

CAUTION



This vehicle is not suitable for use with fuels containing more than 10% Ethanol.

Fuel and refuelling

Fuels containing up to 5% Ethanol (grain alcohol) may be used. Ensure that the fuel has octane ratings no lower than those recommended for unleaded fuel. Most drivers will not notice any operating difference with fuel containing Ethanol. If a difference is detected, the use of conventional unleaded fuel should be resumed.

Methanol

Some fuels contain Methanol (Methyl or wood alcohol). If you use fuels containing Methanol the fuels must also contain co-solvents and corrosion inhibitors for Methanol. Also, do not use fuels which contain more than 3% Methanol even if they contain co-solvents and corrosion inhibitors. Fuel system damage or vehicle performance problems resulting from the use of such fuels is not the responsibility of Land Rover, and may not be covered under the warranty.

CAUTION



Wherever possible avoid using fuel containing Methanol.

Methyl Tertiary Butyl Ether (MTBE)

Unleaded fuel containing an oxygenate known as MTBE can be used provided that the ratio of MTBE to conventional fuel does not exceed 15%. MTBE is an Ether based compound derived from Petroleum, which has been specified by several refiners as the substance to enhance the Octane rating of fuel.

Reformulated gasoline

Several petroleum companies have announced the availability of reformulated fuels. These fuels are specially formulated to further reduce vehicle emissions. Land Rover fully supports all efforts to protect and maintain ambient air quality, and encourages the use of reformulated gasoline where available.

RUNNING OUT OF FUEL

CAUTION



Avoid running out of fuel. Doing so can cause damage to the vehicle's engine, fuel, and emission control systems.

Note: *If the vehicle does run out of fuel, a minimum of 4 litres (1 gallon) will be required to restart the engine. The vehicle will need to be driven 1.6-5 km (1-3 miles) in order to reset the engine management and monitoring systems.*

Note: *If the vehicle does run out of fuel, seeking qualified assistance is advisable.*

Fuel and refuelling

FUEL CUT-OFF

The fuel system cut-off forms part of the Supplementary Restraint System (SRS) fitted to your vehicle. Following an impact, and depending on the severity, the fuel pump may be switched off.

Resetting the fuel cut-off

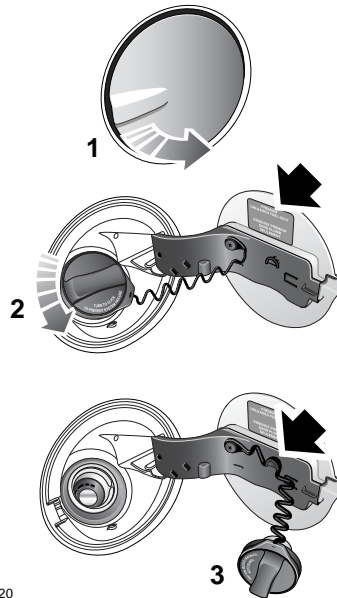
WARNING



The fuel cut-off should never be reset if you can smell fuel, or a leak can be seen. Doing so can lead to a fire which may cause personal injury or death.

1. Switch the ignition off and wait for one minute.
2. Turn the ignition on for 30 seconds.
3. Check the vehicle thoroughly for fuel leaks. If a leak is detected switch the ignition off immediately.
 - Do not start the vehicle if a leak is present. Seek qualified advice, and have the vehicle recovered.
4. If no leaks are detected, start the vehicle.

FUEL FILLER FLAP



E82220

The fuel filler flap is located on the right-hand side of the vehicle, at the rear.

1. Pull the fuel filler flap open.
2. Twist the cap anti-clockwise to undo.
 - Ensure that you read, understand, and fully comply with all warnings and instructions given on the label affixed to the inside of the fuel filler flap.
3. Use the retaining clip to keep the filler cap out of the way whilst fuelling.

WARNINGS



Open the fuel filler cap slowly and allow the pressure to release before fully removing the cap to avoid fuel spillage due to rapid expansion.

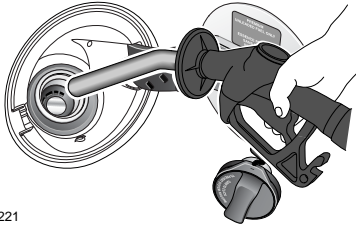
Fuel and refuelling

WARNINGS



Take note of all warnings and instructions given on the label affixed to the inside of the filler flap. Failure to do so may result in injury or death.

REFUELLING



E82221

WARNINGS



When refuelling ensure that all windows, doors, and sunroof are fully closed, particularly if young children or animals are in the vehicle. Fuel vapour contains harmful chemical compounds, some of which may cause cancer.



Do not attempt to fill the fuel tank to its maximum capacity. If the vehicle is to be parked on a slope, indirect sunlight, or high ambient temperature, expansion of the fuel could cause spillage.

CAUTIONS



Ensure that you check the fuel pump information carefully to ensure that you are putting the correct fuel into the vehicle. Filling a vehicle with the incorrect fuel can cause serious engine and fuel system damage.

CAUTIONS



If the vehicle is filled with incorrect fuel it is essential that you seek qualified assistance before you start the engine. Running the engine can cause serious engine and fuel system damage.

Gas station pumps are equipped with automatic cut-off sensing to avoid fuel spillage. Fill the tank slowly until the filler nozzle automatically cuts-off the supply. Do not attempt to fill the tank beyond this point.